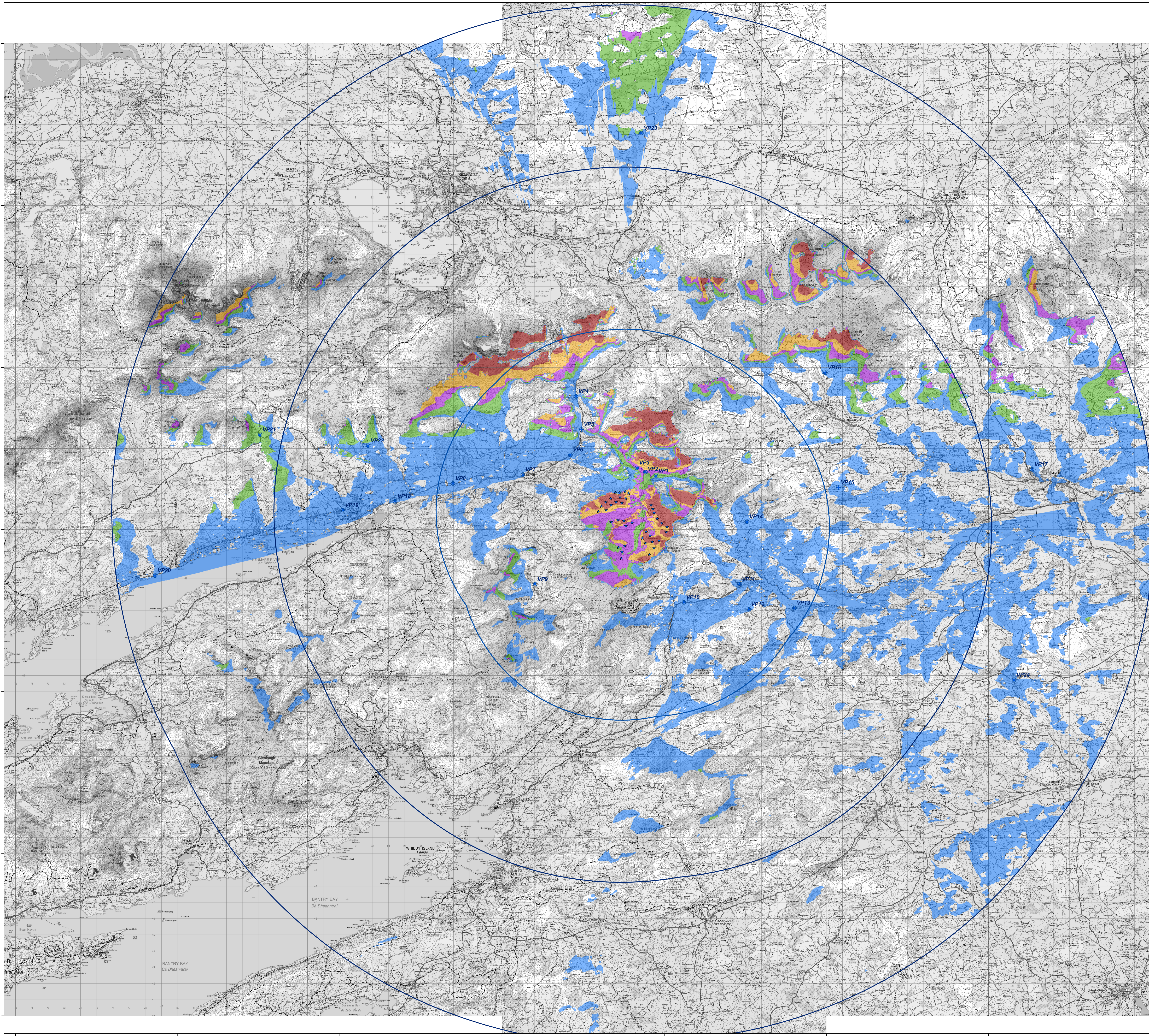
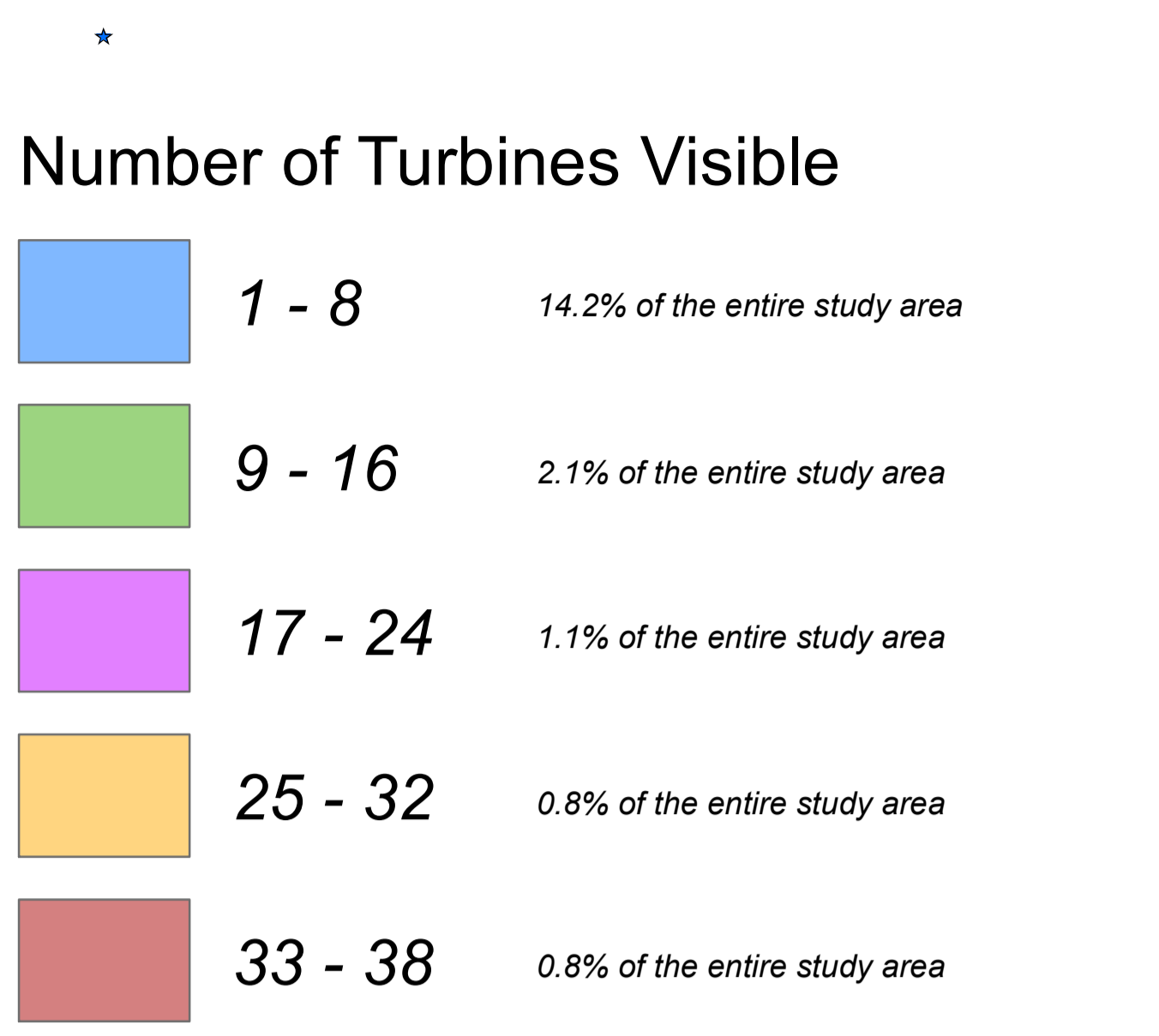


**Zone of Theoretical Visibility (ZTV) map indicating the areas that have a potential view of the proposed Grousemount Wind Farm turbines - calculated to nacelle height (75.5m)**



**Proposed Grousemount Turbines**

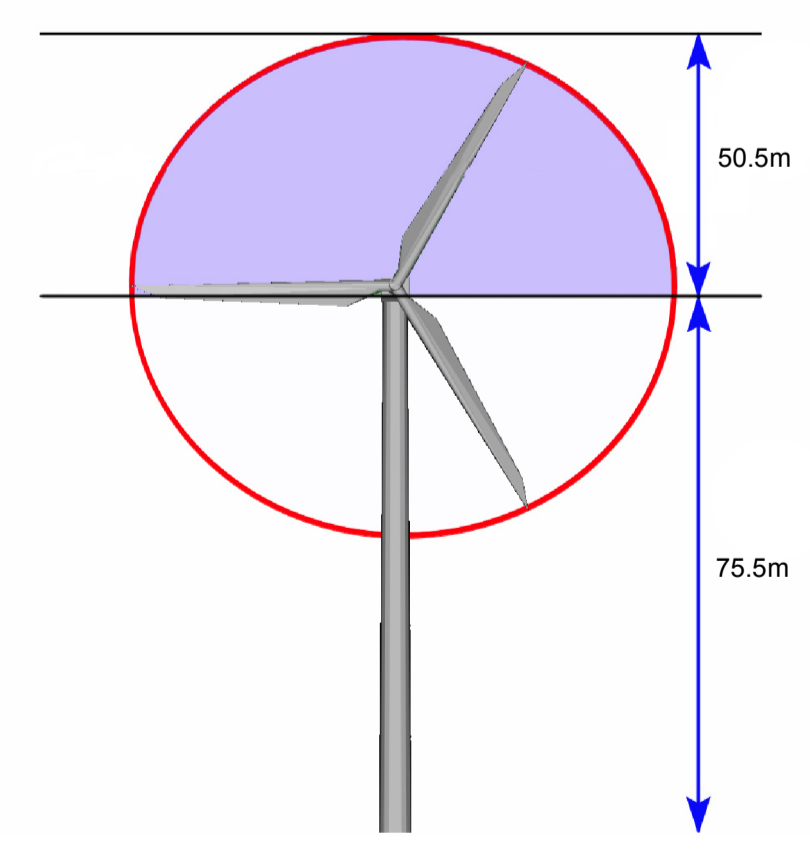
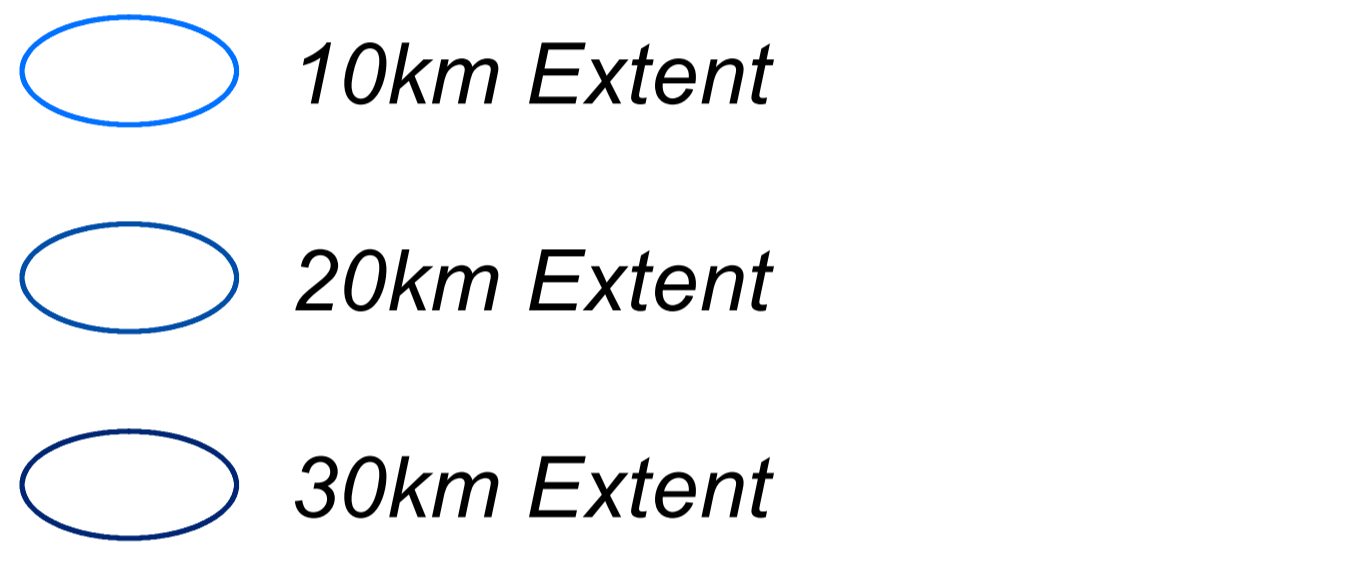


81% of the entire study area to 30km will not have any view of the turbine nacelles of the proposed Grousemount Wind Farm

**Photomontage Viewpoints**



**Proposed Grousemount Extents**



This ZTV map has been calculated such that a turbine registers as being theoretically visible to observers in the surrounding landscape once there is an unobstructed line of sight to its nacelle.  
 Observer Height assumed: 2m to eye-level height  
 Nacelle Heights: 75.5m

Note: This ZTV map is calculated for landform screening only and does not take account of the significant screening effects of vegetation (hedgerows, trees) and buildings inherent across this study area.